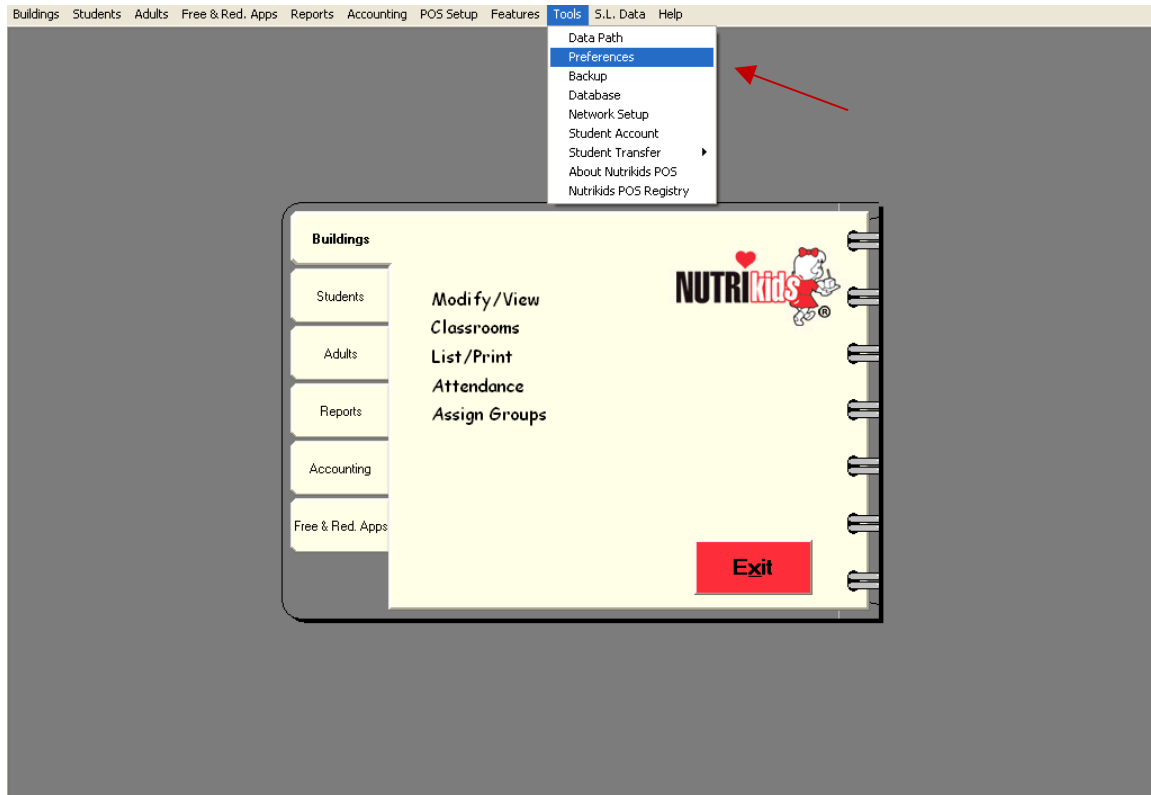


Reset Summary Tables

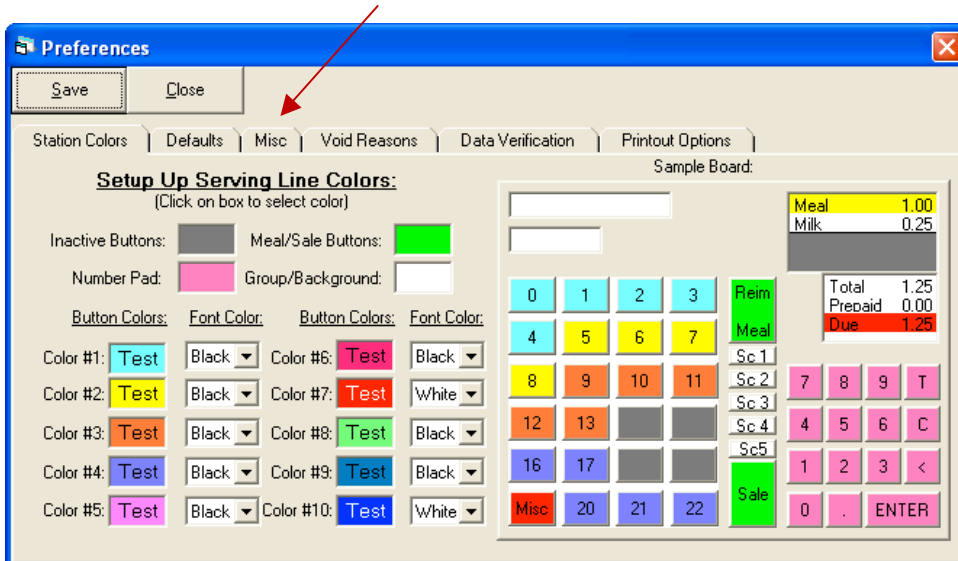
This option is used when your data needs to be corrected after a network failure during an import process. It is used to help correct the data summary tables.

Contact us before you use this feature.

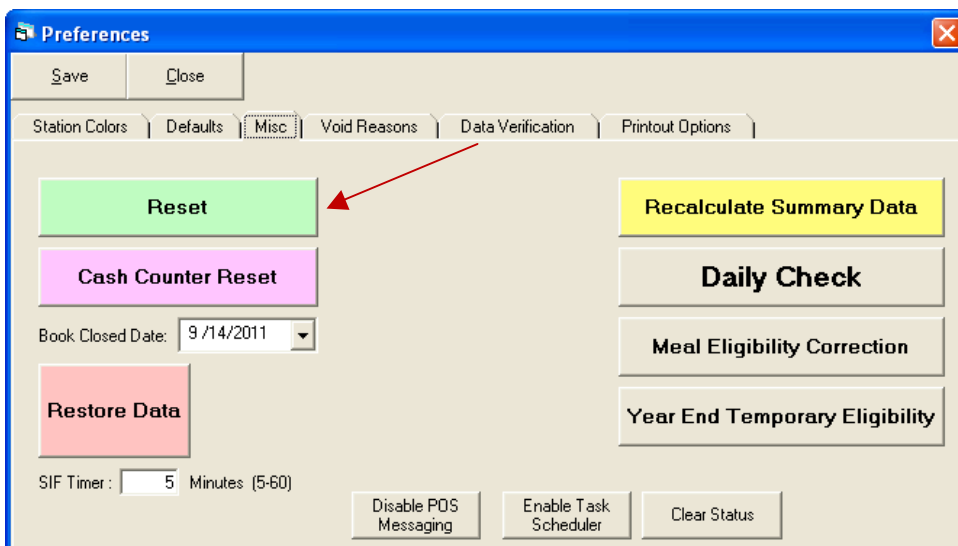


To reset your summary tables:

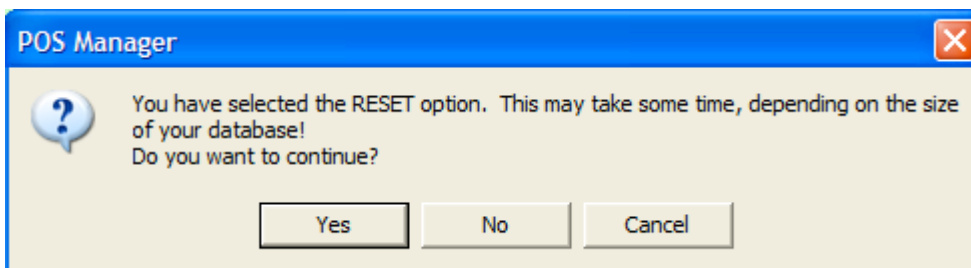
1. Go to **Tools** on the NutriKids toolbar.
2. Click on **Preferences**.
3. The **Preferences** screen appears.



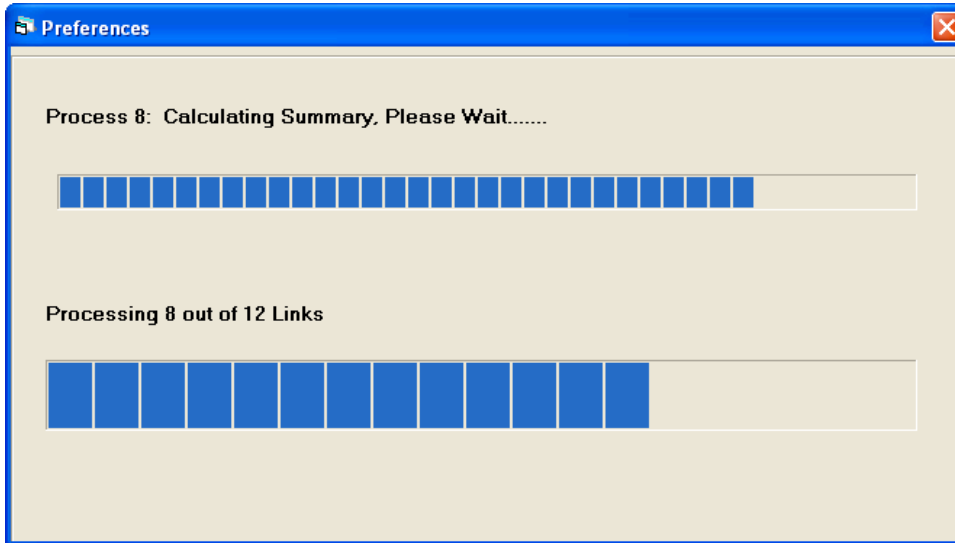
4. Click on **Misc** tab.
5. The **Misc** screen appears.



6. Click on the green **Reset** button.
7. A message appears asking if you want to continue.



8. Click **Yes**.



9. Reset process completed.

10. Click **OK**.



11. Click **Close** on **Misc** tab to exit.

