



Implementing RtI

*Oriskany Central School District
2014-2015*

Compiled and shared by Melissa Lowell

Essential Question:

How do we make the shift from
teacher focus □ learner focus using data?

Data-Driven Instruction: *Tier 1, 2, and 3*

↑ Shift

AIS

- Struggling students

RtI

- 100%
- PK-12

Data-Driven Instruction: *Tier 1, 2, and 3*

2012-2013
PK-12
AIS→Rtl Model



2014-2015
District Grading
Policy

Rtl Specialists
x2

PK-6 Rtl Block
daily; 7-10 3x

Data Meetings &
Benchmarking
3x/yr ALL

2013-2014
PLCs

Rtl Teaching
Assistants x6

Data-driven
instruction
horizontally &
vertically

Formative and
Summative

Teacher Leaders

Instructional
Coaching

FOCUS on data: *The 4 Driving Questions*

Source: Rick and Rebecca DuFour

1. What is it we expect our students to learn?
2. How will we know when they have learned it?
3. How will we respond when they don't learn?
4. How will we respond when they already know it?



Our Goals

**bring out the
best in ALL
children**

**encourage each
other to achieve
more
professionally**

**share knowledge
and
teaching strategies**

**give students
the best of
the best**

**increase
graduation
rates**

**look at the data
to make instructional
decisions**

**increase
student
successes**

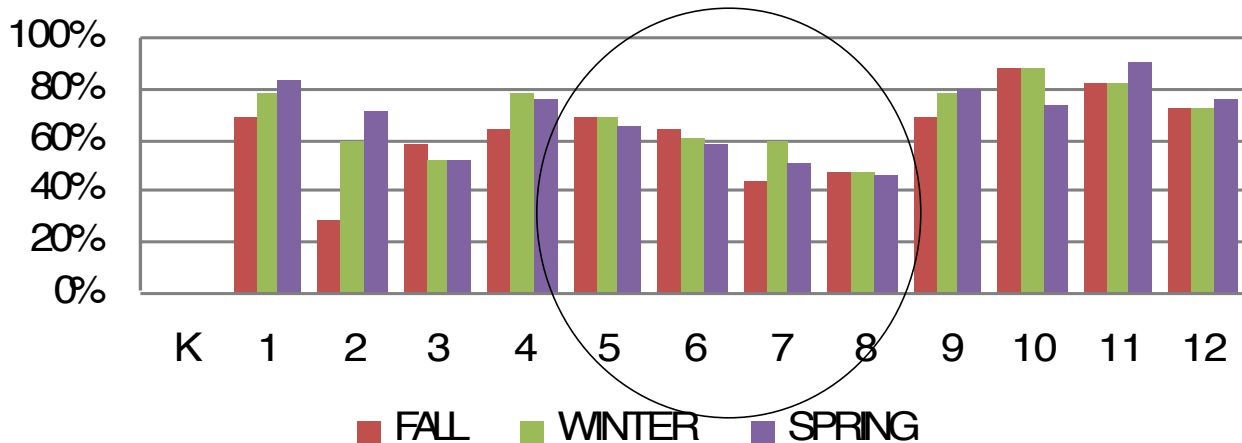
**ensure that
ALL students
are successful**

**maximize their
efforts**

Rtl Reflection: Middle School Example

Math ACHIEVEMENT

Percentage of Students Meeting or Exceeding
45th Percentile (At/Above Grade Level)



Rtl Reflection: Middle School Example

Math 9														
Rtl Period			NYS Math			STAR Math PR			Scaled Score			Fall-->	Class Avg	
#Scores Goals (3)			<290	<293	Δ	Spr 14	Fall 14	Win 15	Fall 14	Win 15	Δ	Winter	MP1	MP2
Q1	Q2	Q3	2013	2014	NYS	PR>45	PR >50		SS>877	SS		SGP>45	65+	
		1	287	290	3	37	33	59	751	833	82	87	80	80
		2	338	328	-10	67	74	82	864	905	41	89	96	90
		3	287	n/a		46	54	46	812	802	-10	30	68	65
		4	320	295	-25	57	79	75	879	880	1	51	88	82
yes		5	313	276	-37	22	33	21	750	722	-28	21	50	50
		6	300	295	-5	57	61	52	827	815	-12	30	71	75
yes		7	306	257	-49	25	26	24	727	733	6	37	66	65
yes		8	313	271	-42	19	38	34	768	767	-1	34	68	79
		9	297	293	-4	32	62	43	829	793	-36	18	80	84
		10		309	n/a	65	58	60	819	836	17	58	75	85
		11	303	295	-8	18	29	59	739	832	93	90	80	89
		12	346	328	-18	73	84	85	905	921	16	74	87	86
yes		13	287	281	-6	33	33	43	752	795	43	64	84	85
		14	317	311	-6	69	52	51	806	814	8	45	68	65
yes		15	234	274	40	21	38	41	767	790	23	51	67	65
		16	287	297	10	17	9	20	632	715	83	78	66	82
		17	350	323	-27	74	81	82	886	905	19	75	76	81
yes		18	302	271	-31	39	21	35	707	769	62	71	55	65
		19	322	309	-13	53	47	46	797	801	4	40	75	75
yes		20	285	271	-14	34	23	18	714	709	-5	30	65	67
		21	293	299	6	29	68	69	848	861	13	59	75	65
		22	334	328	-6	60	82	84	892	915	23	80	94	85
		23	310	274	-36	27	65	51	840	813	-27	20	71	n/a
		24	322	326	4	54	60	72	824	868	44	84	82	84

STUDENT NAMES

Our RtI Goals

**Tier 1 RtI in all
classrooms PK-12**

**Embedded
professional
development**

**Created the
RtI
Toolbox as
faculty**

**PLCs
Collaborative
expertise
&
accountability**

**4 driving
questions**

**Monitor
ALL
students**

**Students see
progress**

**Multiple
measures**

**PK-12Tier 1
AND
Supplemental
instruction**

Rtl Reflection

Growth

☐

- ☐ More differentiation
- ☐ Student success in growth and achievement
- ☐ Changed the culture-more collaboration
- ☐ Buy-in based on student results

Challenges

☐

- ☐ Buy-in initially
- ☐ Time/Schedules
- ☐ Negotiations
- ☐ Collective accountability